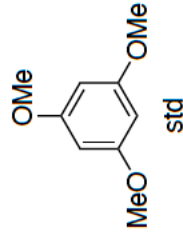
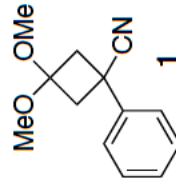


qNMR



$mg_{std} = 18.5 \text{ mg};$   
 $MW_{std} = 168.19 \text{ g/mol}$   
 $mg_1 = 29.2 \text{ mg};$   
 $MW_1 = 217.27 \text{ g/mol}$   
molar ratio = 1.21;  
 $P_{std} = 99\%$

Thus:  $wf_1\% = (18.5 * 217.27 * 1.21 * 0.99) / (29.2 * 168.19) * 100$   
 $= 98.0\%$

